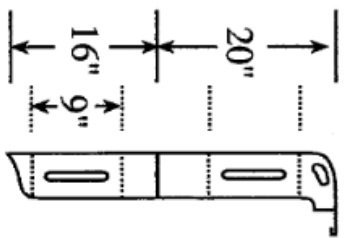
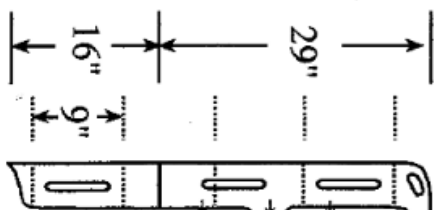


## 4-STEP LADDER



## 5-STEP LADDER

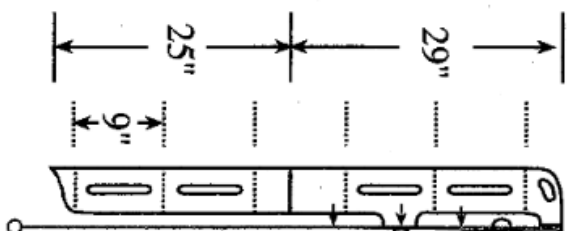


Provide dimension to outside edge of rub rail

Hang plumb line from edge of hull. Measure distance from hull at 12", 18" & 24" Center of standoff leg at 18"\*(3/8" rubber pad touches hull)

\*If distance is more than 2" an additional fold out support (to allow for compact storage) will be added.

## 6-STEP LADDER



Provide dimension to outside edge of rub rail

Hang plumb line from edge of hull. Measure distance from hull at 12", 18" & 24" Center of standoff leg at 18"\*(3/8" rubber pad touches hull)

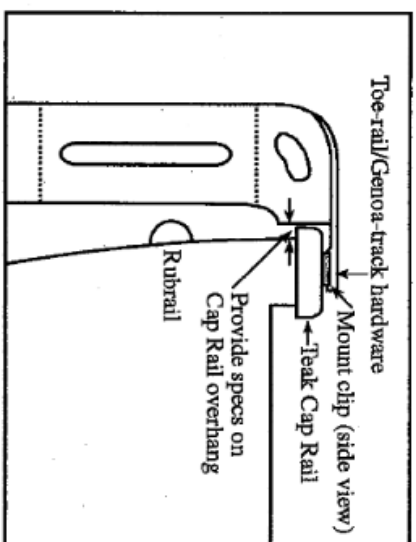
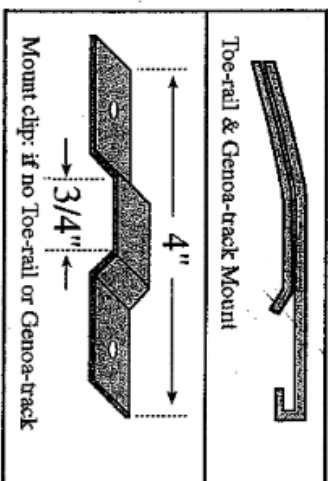
\*If distance is more than 2" an additional fold out support (to allow for compact storage) will be added.

## MOUNTING HARDWARE OPTIONS

**Hull Mount:**  
Pad Eyes & hardware

**Toe-rail & Genoa-track Mount:**  
Toe-rail & Genoa-track hardware  
(Size determined by specs provided)

\*NOTE: Alterations to accommodate large rub rails or hull offset legs may require an additional charge, firm quote will be provided when dimensions as indicated above are provided.



Mount Clip shown with Teak Cap Rail

